



Neurexophilin-3 Polyclonal Antibody

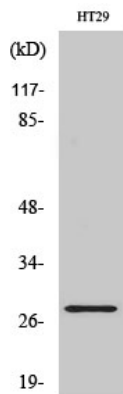
Catalog No	YP-Ab-12753
Isotype	IgG
Reactivity	Human;Mouse;Rat
Applications	WB;IHC;IF;ELISA
Gene Name	NXPH3
Protein Name	Neurexophilin-3
Immunogen	The antiserum was produced against synthesized peptide derived from human NXPH3. AA range:158-207
Specificity	Neurexophilin-3 Polyclonal Antibody detects endogenous levels of Neurexophilin-3 protein.
Formulation	Liquid in PBS containing 50% glycerol, 0.5% BSA and 0.02% sodium azide.
Source	Polyclonal, Rabbit,IgG
Purification	The antibody was affinity-purified from rabbit antiserum by affinity-chromatography using epitope-specific immunogen.
Dilution	WB: 1/500 - 1/2000. IHC: 1/100 - 1/300. ELISA: 1/10000.. IF 1:50-200
Concentration	1 mg/ml
Purity	≥90%
Storage Stability	-20°C/1 year
Synonyms	NXPH3; KIAA1159; NPH3; Neurexophilin-3
Observed Band	30kD
Cell Pathway	Secreted .
Tissue Specificity	Highest level in brain.
Function	function:May be signaling molecules that resemble neuropeptides. Ligand for alpha-neurexins.,PTM:May be proteolytically processed at the boundary between the N-terminal non-conserved and the central conserved domain in neuron-like cells.,similarity:Belongs to the neurexophilin family.,tissue specificity:Highest level in brain.,
Background	function:May be signaling molecules that resemble neuropeptides. Ligand for alpha-neurexins.,PTM:May be proteolytically processed at the boundary between the N-terminal non-conserved and the central conserved domain in neuron-like cells.,similarity:Belongs to the neurexophilin family.,tissue specificity:Highest level in brain.,
matters needing attention	Avoid repeated freezing and thawing!



Usage suggestions

This product can be used in immunological reaction related experiments. For more information, please consult technical personnel.

Products Images

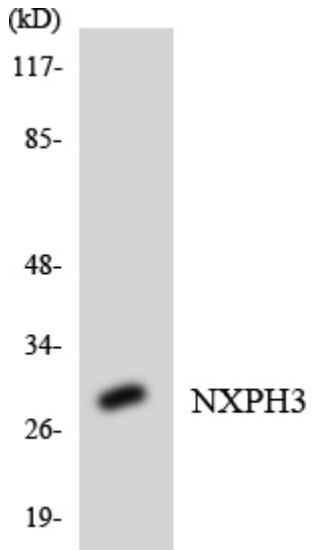


Western Blot analysis of various cells using Neurexophilin-3 Polyclonal Antibody

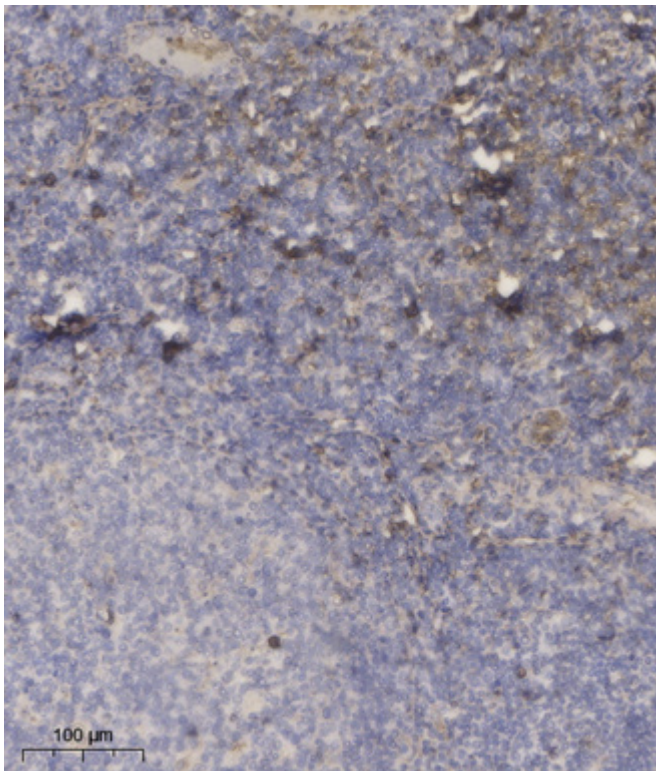


Western blot analysis of lysates from HT-29 cells, using NXPH3 Antibody. The lane on the right is blocked with the synthesized peptide.

NXPH3 --



Western blot analysis of the lysates from HepG2 cells using NXPH3 antibody.



Immunohistochemical analysis of paraffin-embedded human tonsil. 1, Antibody was diluted at 1:200(4° overnight). 2, Tris-EDTA,pH9.0 was used for antigen retrieval. 3,Secondary antibody was diluted at 1:200(room temperature, 30min).